



Updating Contacts in Large Assemblies

Keagan Clement – Senior Application Engineer

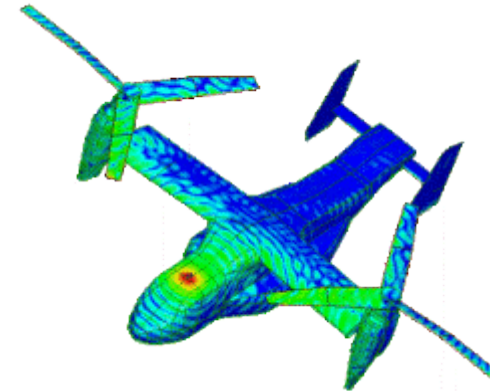
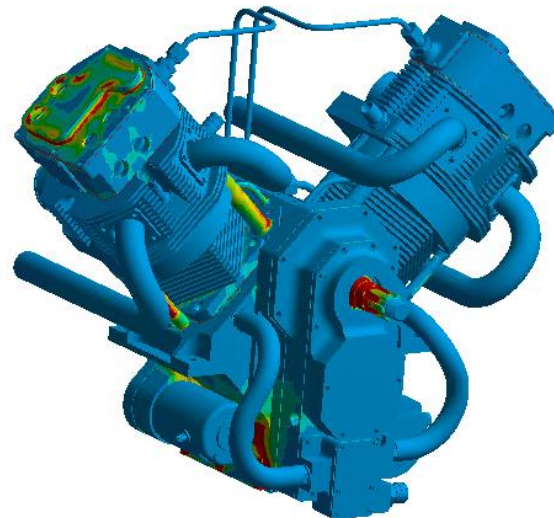
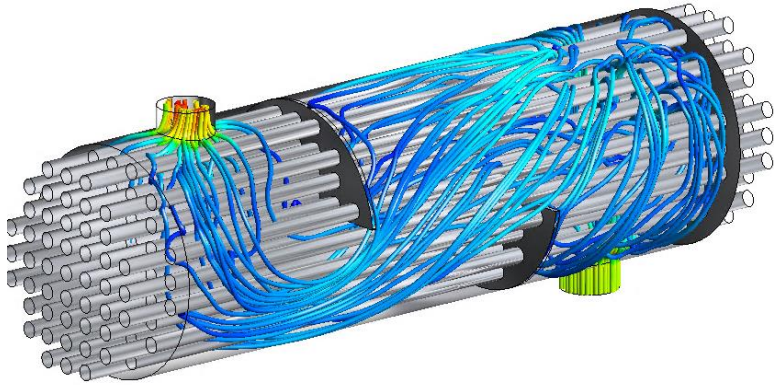
August 27, 2024

Agenda

Introduction to DRD
Techniques for Updating Geometry
Live Demo
Q&A

Mission Statement

DRD Technology helps engineering teams accelerate product development. With in-house expertise spanning the entire range of physics, we ensure customers succeed when using Ansys simulation tools for virtual prototyping and design verification.



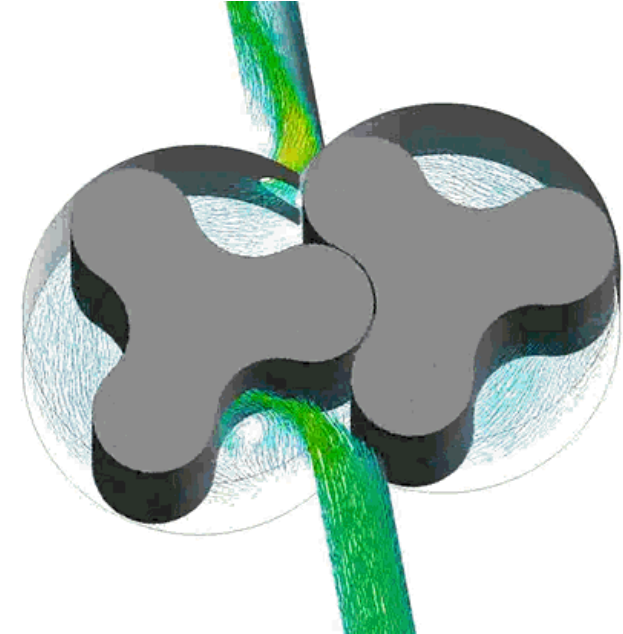
Ansys

CERTIFIED ELITE CHANNEL PARTNER

DRD History

Since 1980, DRD Technology has been focused on engineering simulation.

In 1984, DRD became an Ansys Channel Partner.



Lobe pump

I've been working with DRD for 29 years. Working with your team has been one of the more enjoyable parts of my career. You have always been ready to help in any way.

- Rick Kunc
Sr. Research & Development Engineer



CERTIFIED ELITE CHANNEL PARTNER

August 27, 2024

4


Technical Support Contact Coordinates





Support:
(918) 743-3013 x1
support@drd.com


Or through our website at
www.drd.com




Have a Technical Question?
Does something seem off with your simulation? Or is there a feature you'd really like to see in your Ansys software? Let us know!
[Submit Your Question](#)


Need to Send Us a File?
Upload files requested by our support team via our private Dropbox. Please use the .wbpx archive format when sending a workbench project.
[Upload Your File](#)


Looking for Hardware Requirements?
Get the best results from your Ansys simulation software by having the right computing hardware in place from the start.
[Learn More](#)


Looking for Installation Information?
Have questions on how to download the software or license keys? Learn how with step by step videos.
[Learn How](#)

For more than five years, I have worked closely with DRD Technology to execute tactical and strategic initiatives here at EaglePicher due to our unprecedented growth. We've been very happy with DRD and will continue to work with them as our business partner for using Ansys tools effectively and efficiently.

*- Doug Austin
Director of Research and Development*



Ansys Software Training

Courses from DRD

Structures

- Introduction to Ansys Mechanical (2 days)
- Ansys Composite Cure Simulation (1 day)
- Ansys Mechanical Nonlinear Structural Simulation (2 days)
- Ansys Mechanical Structural Dynamics (2 days)
- Ansys Mechanical Fracture Mechanics (1 day)
- Ansys Mechanical Thermal Simulation (1 day)
- Ansys Composite PrepPost (1 day)
- Ansys Topology Optimization and Metal Additive Manufacturing (1 day)
- Ansys Workbench LS-DYNA (2 days)
- Advanced Meshing for Ansys Mechanical (1 day)
- Introduction to SpaceClaim for Ansys Mechanical (1 day)
- Ansys Mechanical Fatigue Life Prediction (1/2 day)
- Ansys nCode Design Life (2 days)

System Modeling

- Introduction to Ansys Twin Builder for Mechanical Systems (1 day)

Fluids

- Introduction to Ansys CFX (2 days)
- Introduction to Ansys Fluent (2 days)
- Workbench Meshing for Ansys Fluent (1 day)
- Fault Tolerant Meshing for Underhood Thermal Modeling with Ansys CFD (1 day)
- Ansys Rocky (1 day)

Electronics

- Introduction to Ansys HFSS (2 days)
- Ansys HFSS Antenna Design (2 days)
- Ansys HFSS SBR+ Antenna Placement Design (1 day)
- Introduction to Ansys Siwave (1 day)
- Introduction to Ansys HFSS 3D Layout (2 days)
- Introduction to Ansys Maxwell (1 day)
- Ansys Maxwell Motor Modeling (1 day)
- Introduction to Ansys Icepak (2 days)

DRD Tulsa, OK Training Facility

In person training may be conducted at DRD's Tulsa offices or on-site at a customer's facility.

DRD's training has the right mix of theoretical background, technical depth, and practical application.

- Patrick Stahl
Sr. Product Development Engineer



Ansys Expert Mail List

Request to be added by sending a note to support@drd.com

Ansys Expert Tech Corner

We hope that our website provides a great deal of valuable technical information, which is available to anyone who visits our website. The technical materials on this page, however, are intended only for DRD's customers, and are, therefore, password protected. We provide these materials to our customers as a benefit for doing business with DRD, and at our discretion we provide them to selected DRD friends and associates.

The topics on this page are intended for engineers who are interested in highly technical and detailed information on Ansys. These topics contain information, which is not readily available to Ansys users through standard documentation and training courses. For example, some topics provide information on Ansys capabilities that are under development or are not documented.

Previous Expert Topics

- [2022](#)
- [2021](#)
- [2020](#)
- [2019](#)
- [2018](#)
- [2017](#)
- [2016](#)
- [2014 - 2015](#)
- [2003 - 2013](#)

Fracture Mechanics Webinar: Gain Insight Into Structures with Cracks with Ansys Fracture Mechanics - (April 2023)

This webinar, conducted on April 28, 2023, provides a brief overview of fracture mechanics and Ansys capabilities in fracture analysis. DRD discusses safe-life vs. damage tolerant design, material data acquisition, and simulation of cracks in structures. Ansys fracture capabilities include both stationary, and static and fatigue crack growth options for engineers to analyze their systems.

For a recording and the presentation slides, download [here](#). (A password is [required](#) if you have not obtained one already. Select Fracture Mechanics Webinar (April 2023) from the password topic list).

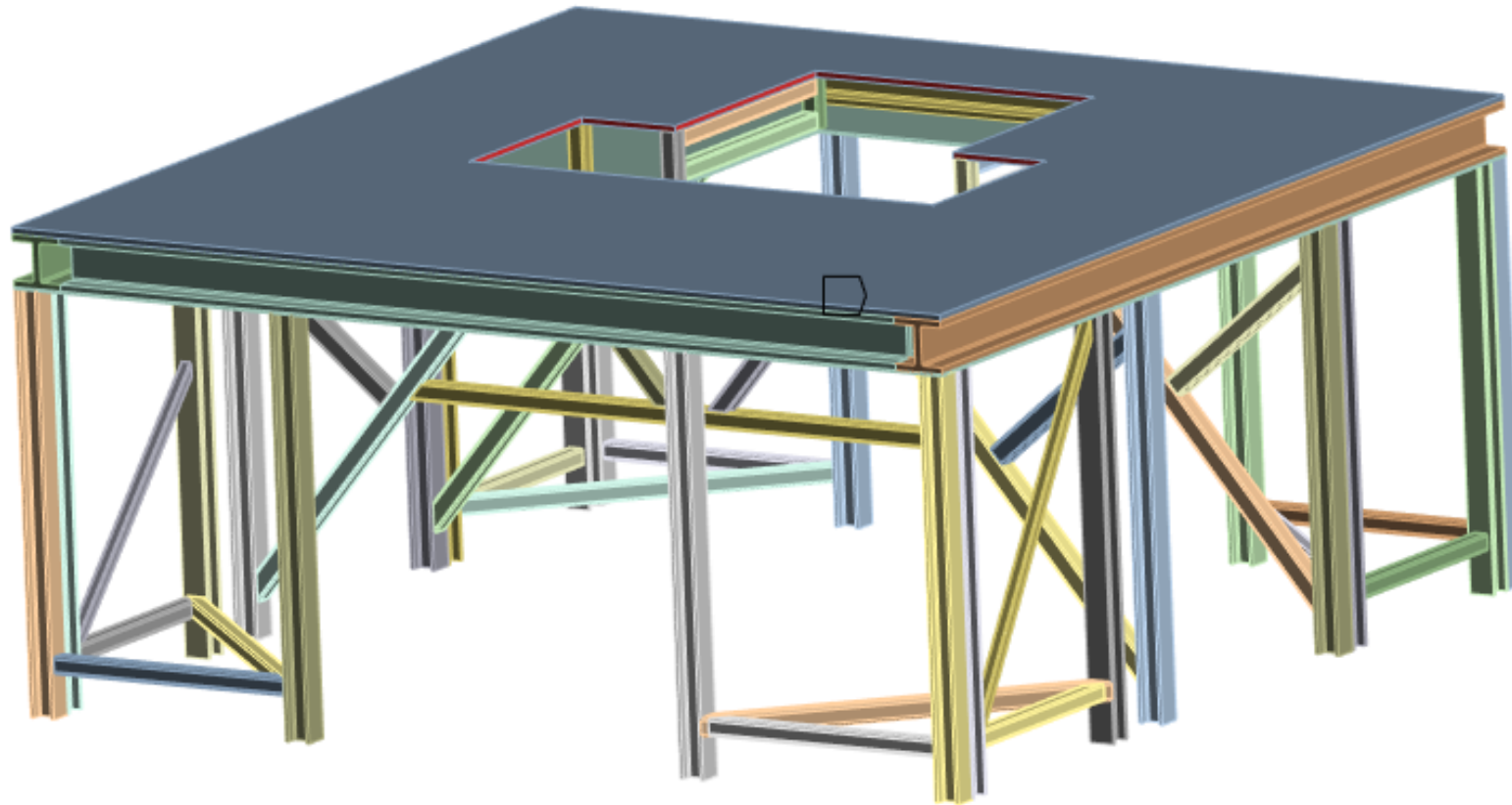
Purpose

- Contact management can be challenging when making geometry changes
- Mechanical has features for managing scoping after updating geometry
- Goals: define new contacts, fix lost scoping, avoid repeating work

Summary of Features Shown

- Updating Mechanical with new geometry
- Generating contacts on subassembly
- Tree filtering to identify duplicate contacts
- Duplicate finder tool
- Geometry import
- Scoping Wizard

Live Demo



Summary of Features Shown

- Updating Mechanical with new geometry
- Generating contacts on subassembly
- Tree filtering to identify duplicate contacts
- Duplicate finder tool
- Geometry import
- Scoping Wizard

Questions?